



# GAS RATIO LOG

WELL : LONGTOM-3



FROM (m): 1000 TO (m): 2800 SCALE: 1/ 500

### GENERAL DATA

Client : NEXUS ENERGY  
 Country : AUSTRALIA  
 Permit : VIC/P54  
 Basin : GIPPSLAND  
 Well Type : APPRAISAL  
 Rig Name : OCEAN PATRIOT

### LOCATION DATA

Latitude : 38°05'34.774"S  
 Longitude : 148°18'41.479"E  
 RT - MSL (m): 21.5  
 Water Depth (m): 56.7

### CASING

762mm (30") Shoe: 110.8m  
 340mm (13 3/8") Shoe: 995.3m

### FINAL WELL DATA

Total Depth (mMDRT): m  
 TVD SS (m): m  
 Date Well Spudded : 11-07-2006  
 Date TD Reached : XX-09-2006  
 Final Status : ?

### GAS RATIOS FORMULAE

**GAS WETNESS RATIO (Wh)**  
 $GWR = (C2 + C3 + C4 + C5) / (C1 + C2 + C3 + C4 + C5) * 100$

**LIGHT TO HEAVY RATIO (Bh)**  
 $LHR = (C1 + C2) / (C3 + C4 + C5)$

**OIL CHARACTER QUALIFIER (Ch)**  
 $OCQ = (C4 + C5) / (C3)$

### LITHOLOGY LEGEND

- |  |                 |  |                 |  |                |
|--|-----------------|--|-----------------|--|----------------|
|  | Claystone       |  | Limestone       |  | Sponges        |
|  | Siltstone       |  | Dolomite        |  | Brachiopoda    |
|  | Shale           |  | Coal            |  | Cement         |
|  | Fine SST        |  | Arg. SST        |  | Glauconite     |
|  | Medium SST      |  | Lithic Fragment |  | Pyrite         |
|  | Coarse SST      |  | Foraminifera    |  | Iron Minerals  |
|  | Marl            |  | Fossils         |  | Mica           |
|  | Clay, Limestone |  | Bryozoa         |  | Carb Fragments |

1 unit = 200 ppm methane equivalent in air

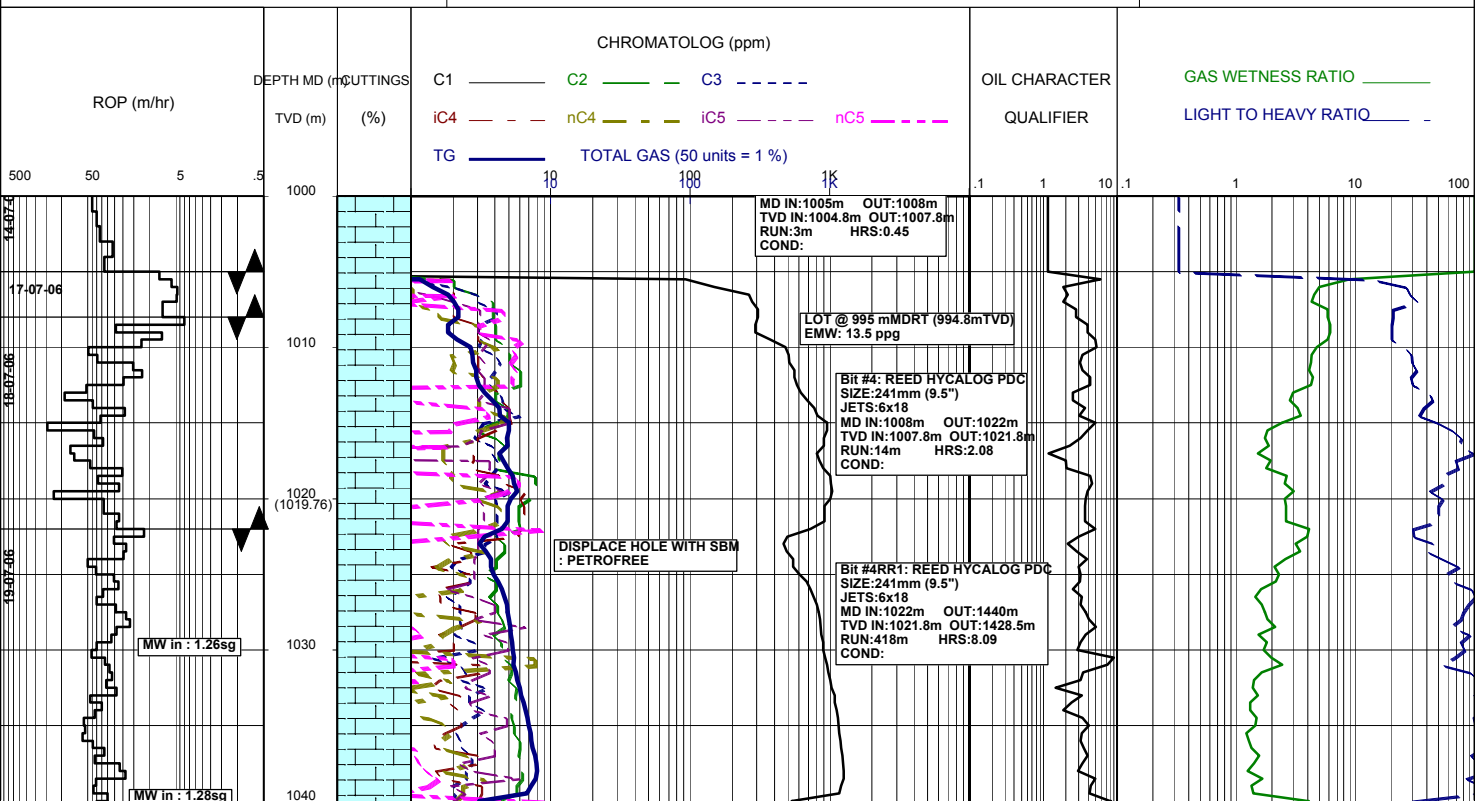
### GEOSERVICES CREW

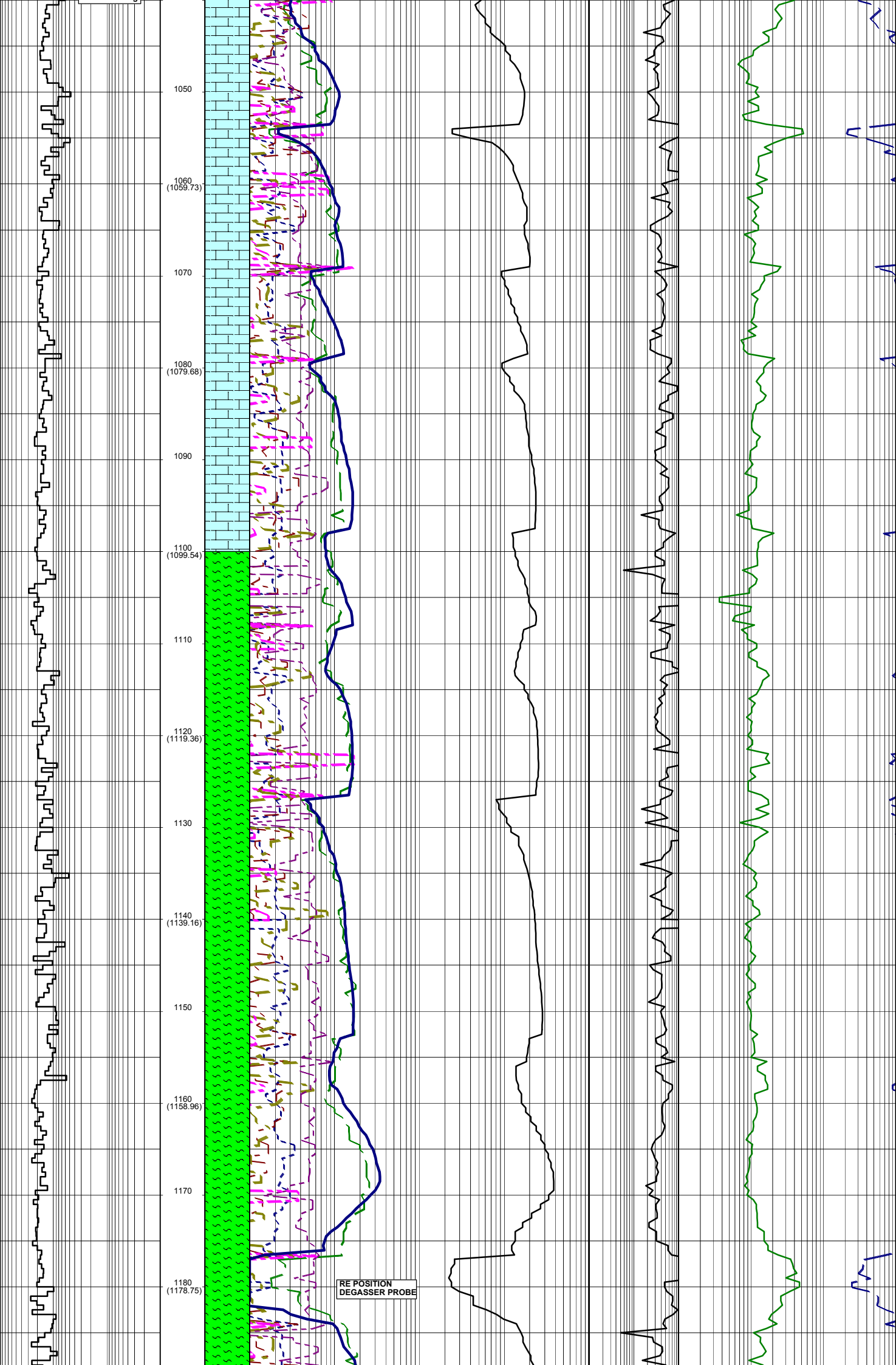
#### ALS ENGINEERS

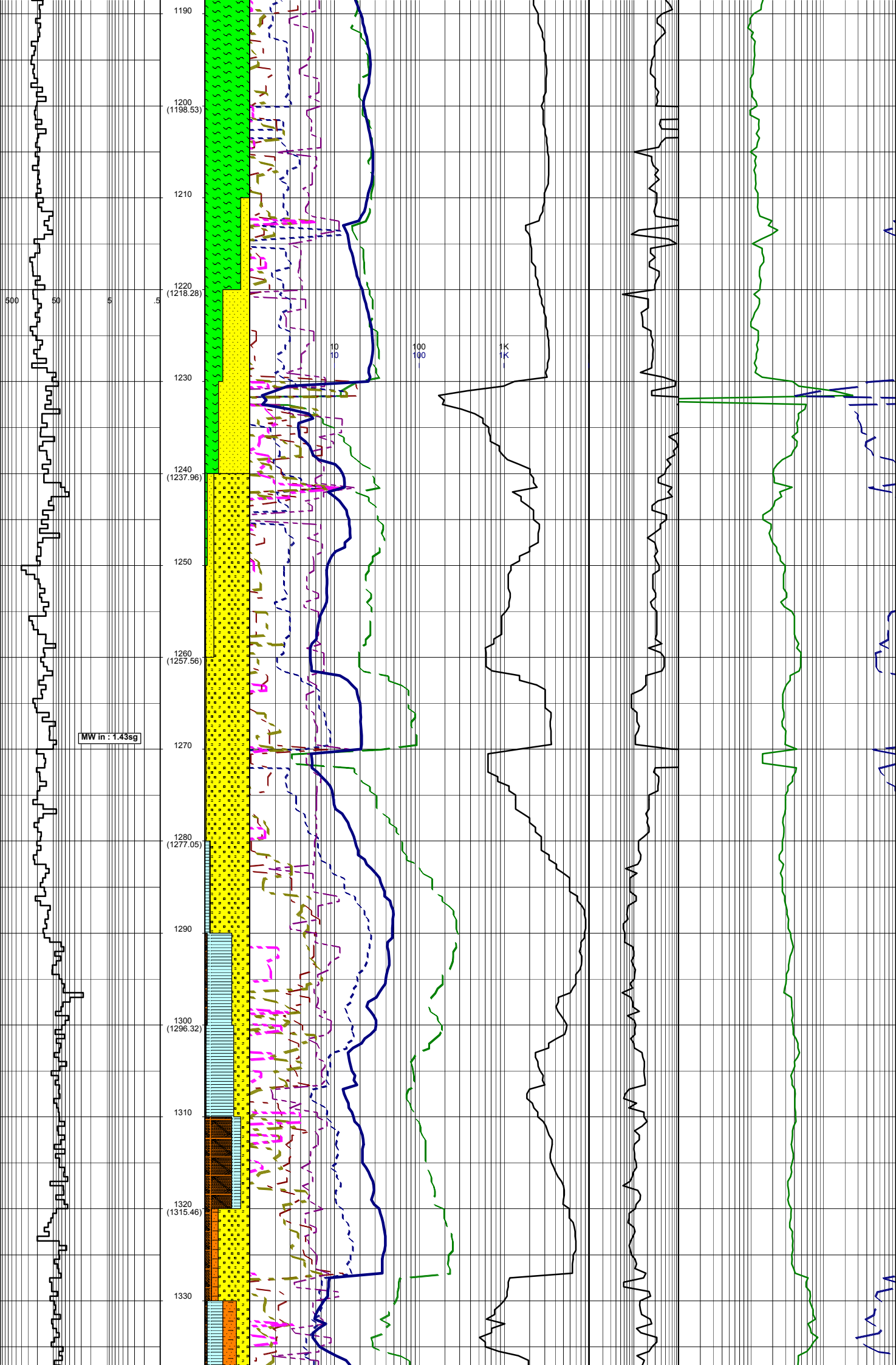
T. N. KYAW  
 F. MAKHAD  
 A. DUNN  
 D. ADDERLEY

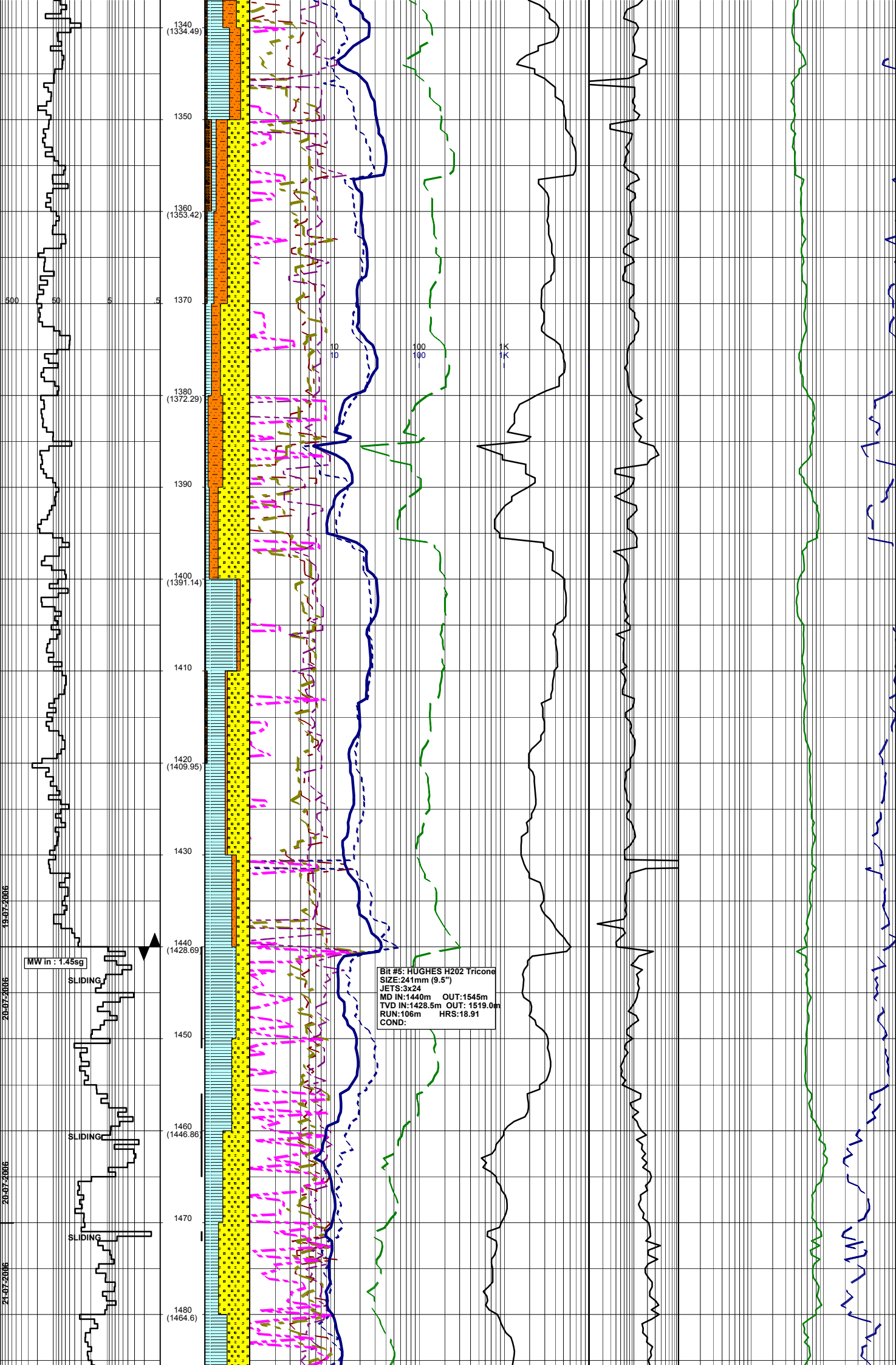
#### MUDLOGGERS

178mm(7")









1340 (1334.49)  
 1350  
 1360 (1353.42)  
 1370  
 1390 (1372.29)  
 1390  
 1400 (1391.14)  
 1410  
 1420 (1409.95)  
 1430  
 1440 (1428.69)  
 1450  
 1460 (1446.86)  
 1470  
 1480 (1464.6)

Bit #5: HUGHES H202 Tricone  
 SIZE:241mm (9.5")  
 JETS:3x24  
 MD IN:1440m OUT:1545m  
 TVD IN:1428.5m OUT: 1519.0m  
 RUN:106m HRS:18.91  
 COND:

MW in : 1.45sg

SLIDING

SLIDING

SLIDING

500

50

5

0.5

19-07-2006

20-07-2006

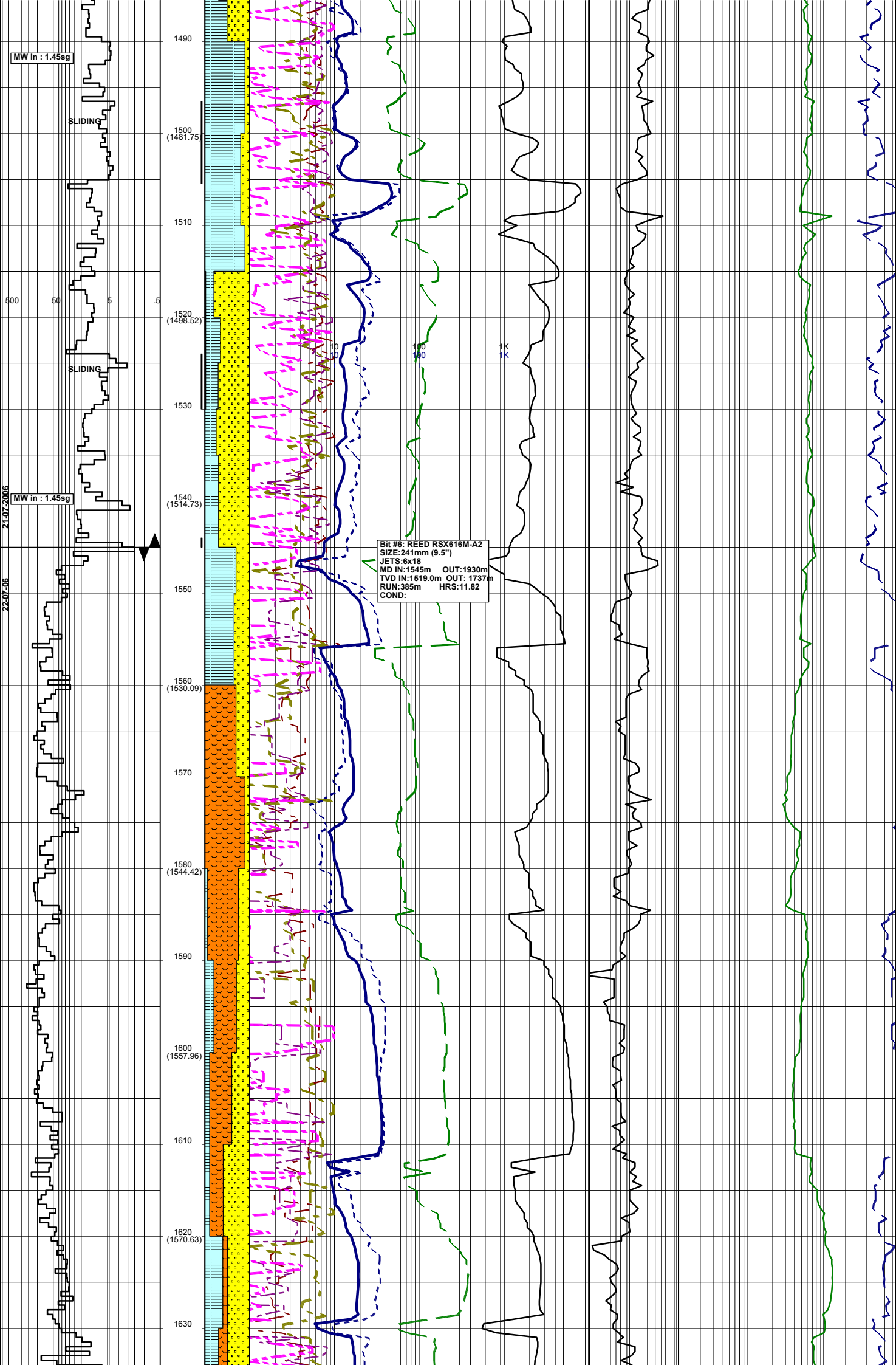
20-07-2006

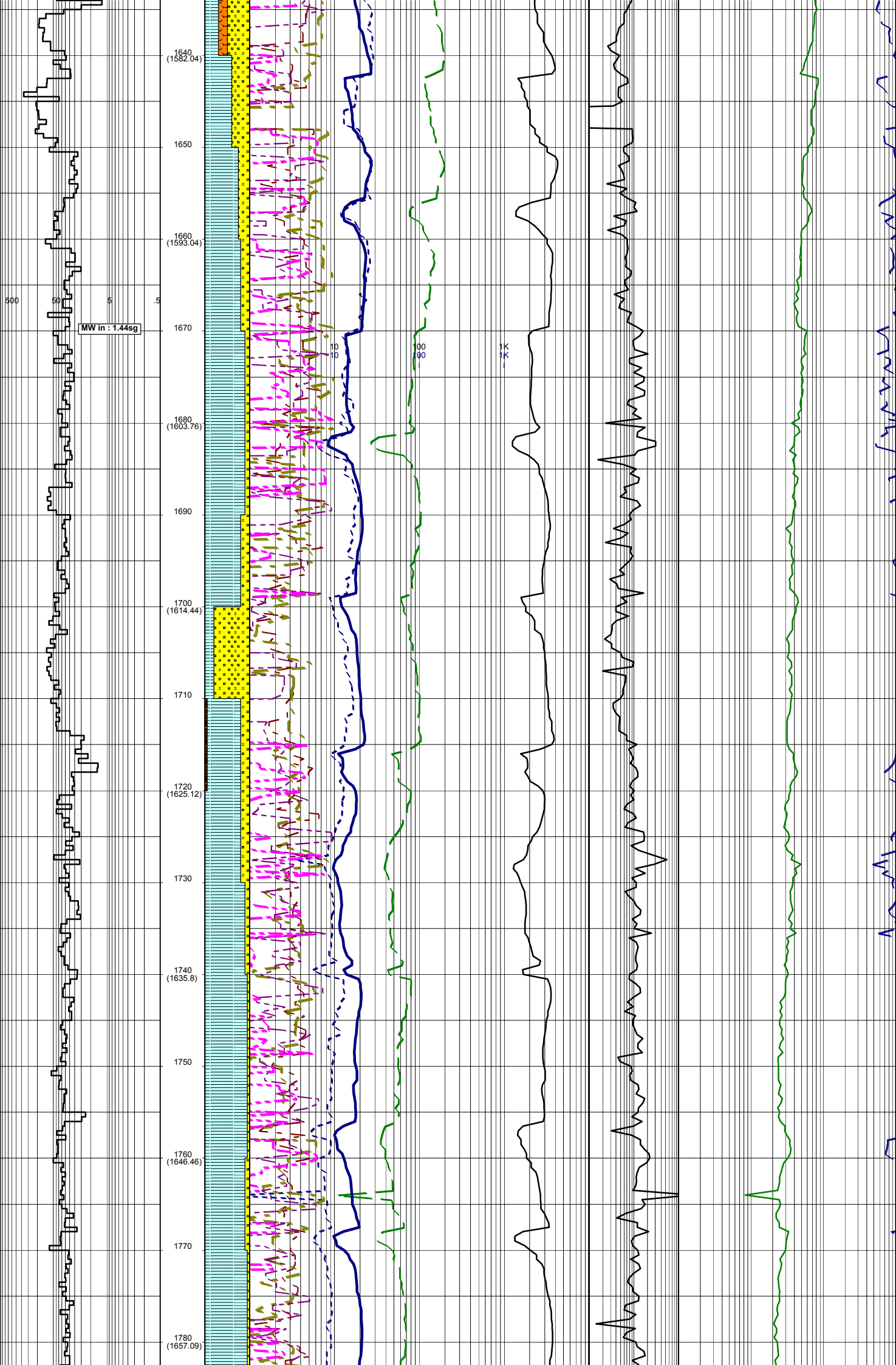
21-07-2006

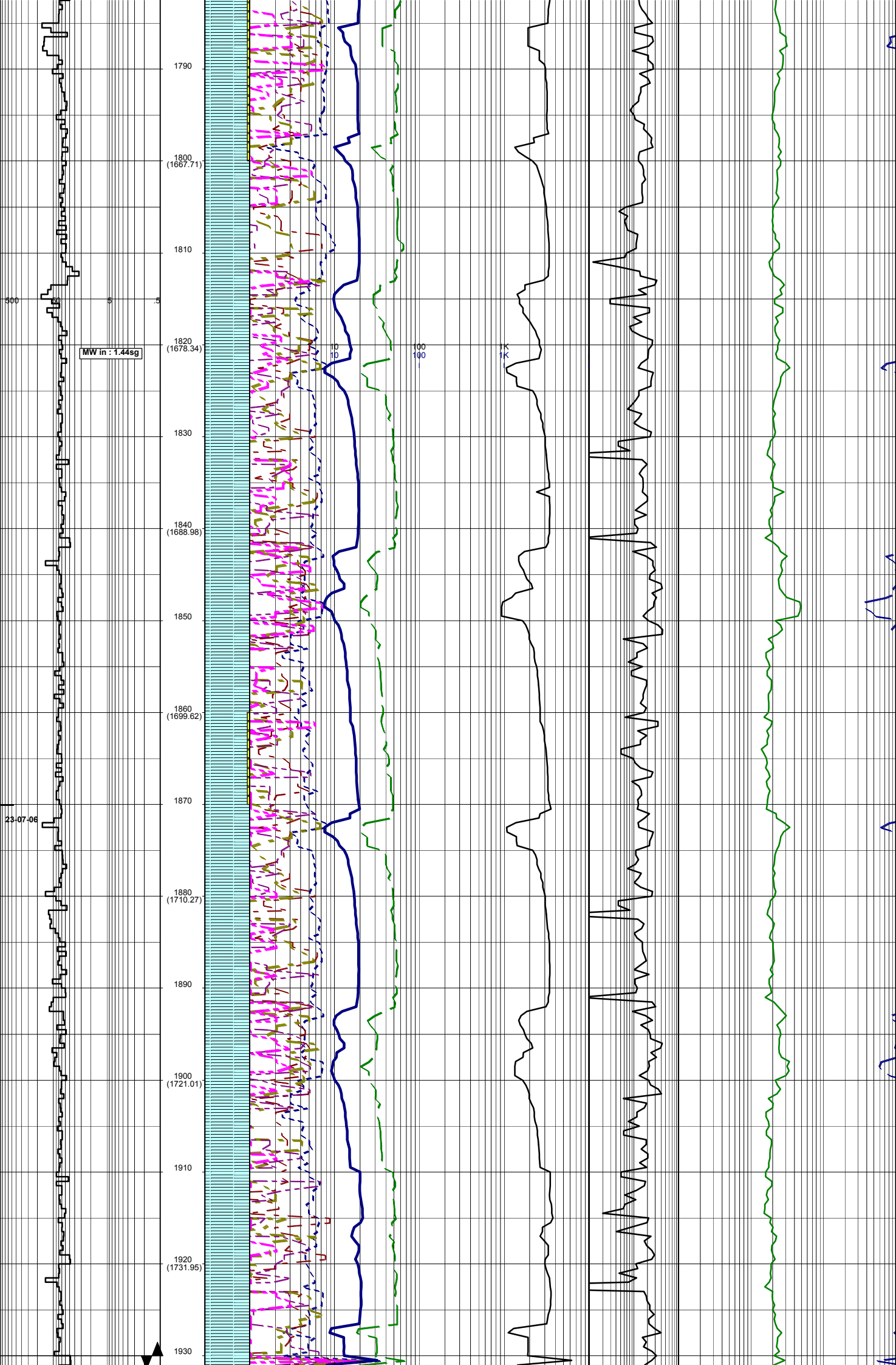
100

100

1K







MW in: 1.44sg

Bit #: SMITH M716PXC  
SIZE: 241mm (9.5")  
JETS: 5x18 & 2x16  
MD IN: 1930m OUT: m  
TVD IN: m OUT: m  
RUN: m HRS: m  
COND: m

1940 (1743.09)  
1950  
1960 (1754.45)  
1970  
1980 (1766.05)  
1990  
2000 (1777.73)  
2010  
2020 (1789.44)  
2030  
2040 (1800.9)  
2050  
2060 (1812.08)  
2070  
2080

500

5

.5

10

100

1K

24-07-06

MW in: 1.44sg

